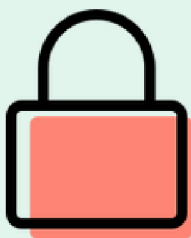




The Ultimate Checklist:

Is your Association Integrating Software?

9 Important Questions To Ask

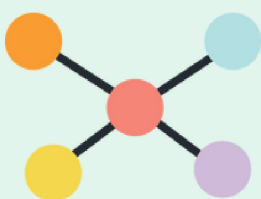


Single Sign-on (SSO)

With SSO, your members can access multiple systems using one username and password.

SSO Checklist

- ☐ What authentication protocols do you use (i.e., OAuth, SAML, OpenID, and CAS)?
- ☐ Have you built your own SSO platform, or do you use an underlying system?
- ☐ Do you support advanced features like multi-factor authentication?
- ☐ How do you license?



Data Sync

Data synchronization ensures that data flows between your connected systems and is consistent and up-to-date.

Data Sync Checklist

- ☐ Do you have an Open API?
- ☐ What standard is your API built on?
- ☐ Do you integrate with any iPaaS systems?
- ☐ Are there additional costs for using your API and implementing integrations?
- ☐ How do you build and support your integrations?